

MacBook Air 13" Battery Replacement
 2020 Model:A2337
 Battery Model:A2389

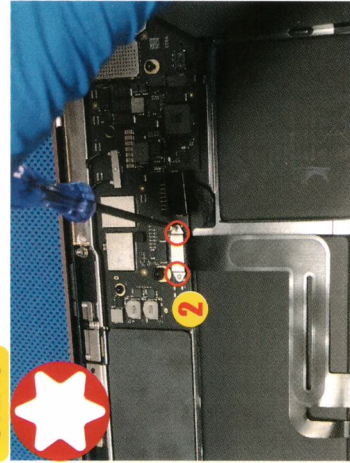
Warnings

! The disconnection is only allowed when the computer is shut down and power disconnected. It is required to operate in a sequence illustrated in the figure.
 ! Never disconnect the old original battery with great strength, or it might cause deformation of the touchpad and damages and burning of the battery.
 ! The positions of the components may slightly differ due to the differences of computer model and production year. Please operate in accordance with the actual situation of your computer.
 After installation, the computer will start up automatically after being charged for one minute or so.
 If you notice any unusual behavior or problems after installing your new battery, you may need to reset your MacBook Pro's SMC.
<https://support.apple.com/en-gb/HT201295>

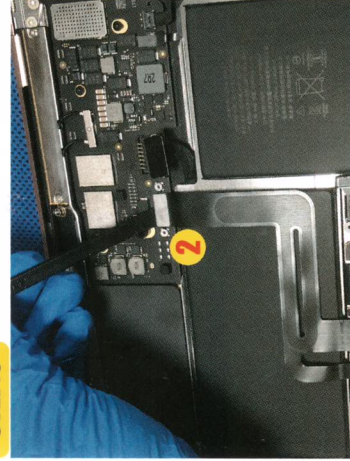
STEP:1 Remove the rear cover screw



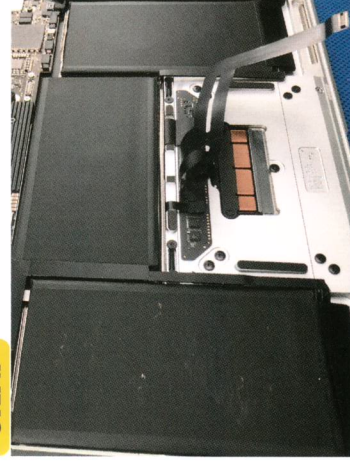
STEP:5 Remove the FPC screw



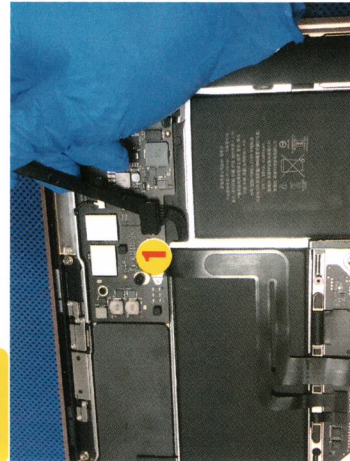
STEP:6 Disconnect the FPC interface



STEP:7 Turn the FPC over



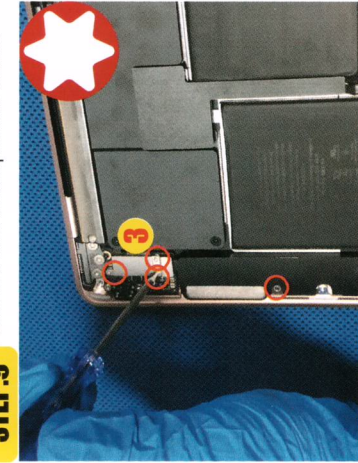
STEP:4 Disconnect the battery interface



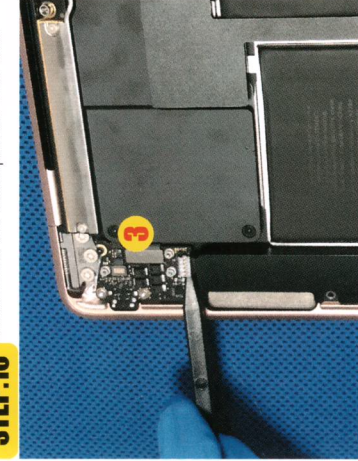
STEP:8 Disconnect the loudspeaker interface



STEP:9 Remove the loudspeaker screw



STEP:10 Disconnect the loudspeaker interface



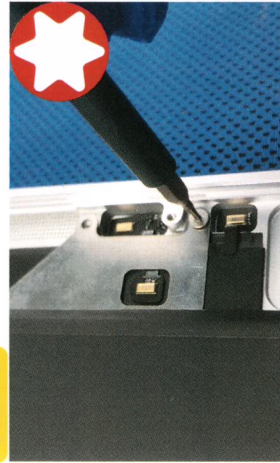
STEP:11 Slowly pull out the loudspeaker adhesive tape at both ends



STEP:12 Remove the loudspeaker at both ends



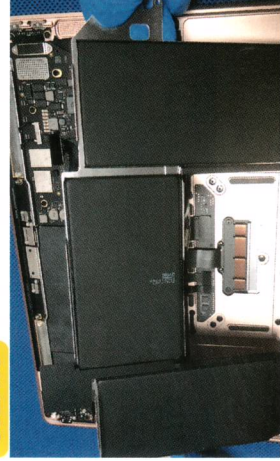
STEP:13 Remove the battery screws at both ends



STEP:14 Pry up the battery adhesive tape



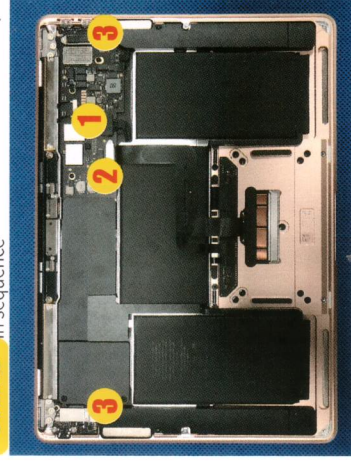
STEP:15 Pick up the battery



STEP:2 Open the rear cover



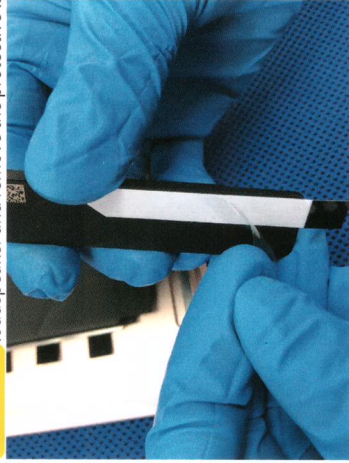
STEP:3 Disconnect the above interface in sequence



STEP:16 Remove the new adhesive tape



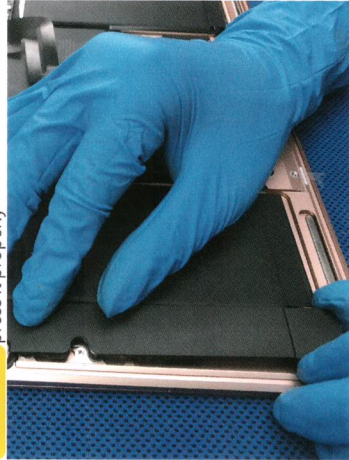
STEP:20 Attach the new adhesive tape on the loudspeaker and remove the protective layer



STEP:17 Attach the new adhesive tape to the computer and tear off the protective layer



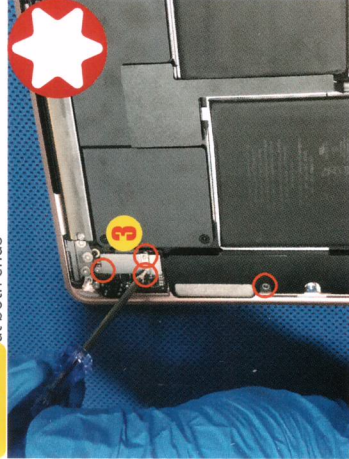
STEP:21 Install the loudspeaker and press it properly



STEP:18 Lay the battery flat after angling the screw positions at both ends of the battery



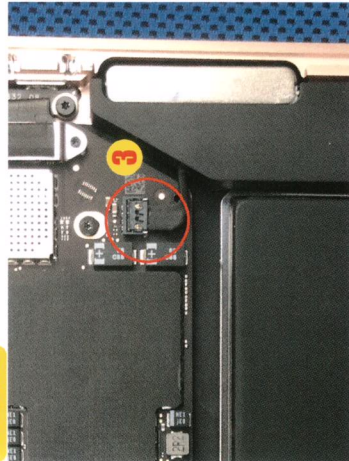
STEP:22 Fix the loudspeaker screws and interface at both ends



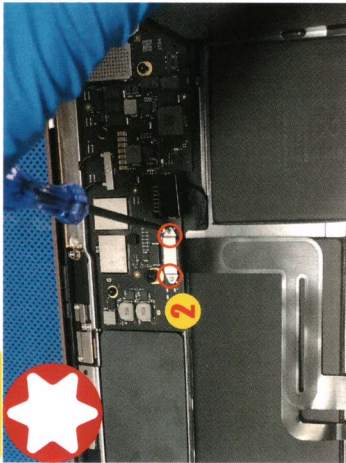
STEP:19 Fix the screws at both ends of the battery



STEP:23 Fix the loudspeaker interface



STEP:24 Turn the screw on



STEP:25 Install the battery interface, please align the position



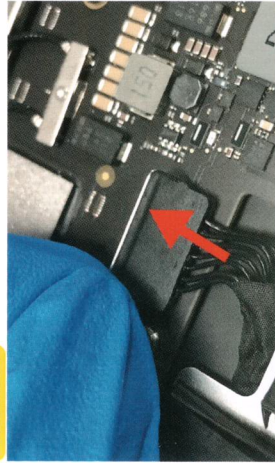
STEP:26 Install the battery interface, please align the position



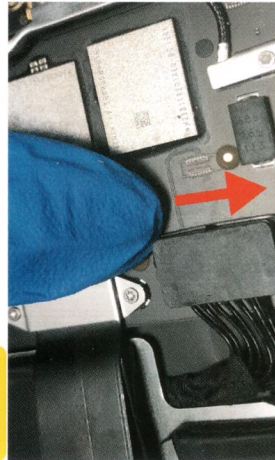
STEP:27 Install the battery interface, please align the position



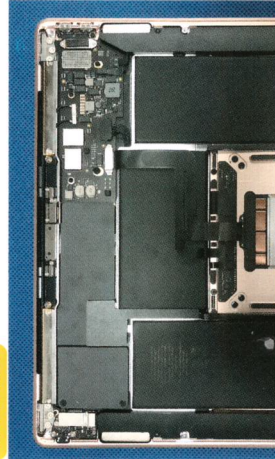
STEP:28 Press the hoop



STEP:29 Press the hoop



STEP:30 installation complete



STEP:31 Install the rear cover. The replacement is completed.

